



AMERICAN THORACIC SOCIETY INTERNATIONAL CONFERENCE

May 17- May 22, 2019 | Dallas, Texas

conference.thoracic.org

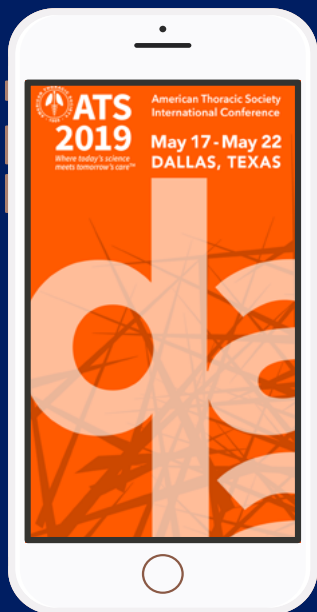
2019 ROAD MAP FOR EARLY CAREER PROFESSIONALS



dallas
tx

CONTENTS

Welcome Letter.....	2
Tips for First Time ATS Attendees.....	3
Networking Exchange for Early Career Professionals	4
Road Map Schedule	5
Important Events for Early Career Professionals	10
The ATS at a Glance.....	11
ATS Assembly Membership Meetings.....	12
Center for Career Development Schedule of Events.....	13
ATS Faculty Development Series	14
Diversity Forum & Women's Forum.....	15
BEAR Cage	16
ATS Science & Innovation Center	17
Get Social.....	18
Convention Center Map	19
Corporate Sponsors	20



**For conference info at your fingertips, look for the
ATS 2019 Conference App
in the App Store or Google Play!**

Learn more at conference.thoracic.org.



ATS 2019
Where today's science meets tomorrow's care™

Dallas, TX
May 17 - May 22, 2019
conference.thoracic.org

WELCOME



Jeremy Richards, MD, MA
Chair, MITT Committee

Welcome to ATS 2019 in Dallas, Texas! With more than 15,000 attendees from more than 100 countries, those of us in the Members In Transition and Training (MITT) Committee understand that it can be difficult to figure out how to navigate this enormous conference. So, to help you as an ATS member in training or early in your career, we have created the Road Map for Early Career Professionals.

The Road Map for Early Career Professionals is a flowsheet of all the major events at ATS 2019, and we have highlighted activities of particular interest to ATS members in training and early career professionals. In addition to the Road Map for Early Career Professionals, there are also other focused Road Maps for those of you with different sub-specialty interests, including Road Maps for Sleep Medicine, Pediatric Pulmonology, and Medical Education (see page 9 for QR codes to link to those Road Maps). Finally, the full ATS conference program is worth checking out to find symposia and poster sessions related to other specific interests you may have.

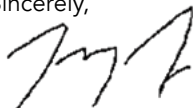
In this booklet, we have also highlighted several events, programs, resources and tools that are of particular interest to residents, fellows, and early career professionals in our Tips for First Time ATS Attendees (see page 3). In addition, the following events and opportunities are high-yield components of the ATS 2019 conference, and definitely worth checking out:

- **Diversity Forum** (Sunday, May 19th, 11:45am-1:15pm, Hyatt Regency Dallas): Focused on addressing key issues with regard to diversity and underrepresented minorities in Pulmonary, Critical Care, and Sleep Medicine, the Diversity Forum is an important and valuable event at ATS 2019 for trainees and early career professionals.
- **Women's Forum** (Monday, May 20th, time 11:45 am-1:15pm, Hyatt Regency Dallas): Supporting the advancement of women in Pulmonary, Critical Care, and Sleep Medicine and recognizing achievements and successes of women in the field is the focus of the Women's Forum. Trainees and early career faculty are encouraged to attend, participate, and network at this event.
- **ATS Assembly Mentoring Programs:** Please go to www.thoracic.org/go/mentoring-program to learn more about this valuable component of the ATS 2019 International Conference.
- **Assembly Business Meetings:** We strongly believe that the Assembly business meetings are the best way to get involved in the ATS. More information about the ATS Assemblies can be found on page 12.

In addition to all these activities, there are many ways to get involved with in the ATS outside of the International Conference. If you would like to get involved with ATS activities after the conference is over, please contact ATS staff members Elizabeth Guzman and Rebecca Fisch, who work closely with the MITT Committee at fellows@thoracic.org and please sign up to get involved at <https://www.thoracic.org/members/assemblies/get-involved-with-ats.php>

Again, on behalf of the entire MITT Committee, welcome to ATS 2019! We hope you have an exciting, informative, and valuable experience.

Sincerely,



Jeremy Richards, MD, MA
Chair, MITT Committee
jbrichar@bidmc.harvard.edu
[@jbricha1](#)

TIPS FOR FIRST TIME ATS ATTENDEES

1 **Don't be shy to ask questions!** ATS is a friendly environment of clinicians and scientists who are excited to be presenting their work and would be thrilled to engage in conversation, develop new collaborations, and get to know early career members and trainees.

2 **Review the program** before the start of the conference so you can pick out the sessions of most interest to you and create an agenda for the meeting. Discuss your session choices with mentors and others who have attended prior ATS conferences.

3 **The ATS Early Career Road Map** features high-impact presentations that would be helpful for early career ATS members. This year, we also have customized road maps for those interested in medical education, sleep or pediatric medicine. (Page 5-9)

4 **The Early Career Networking Exchange** is a very popular event that is great for re-connecting with old colleagues and meeting new ones. This year it will be held at 5:30-6:30 pm on Saturday, May 18, at the Omni Dallas Hotel, Trinity Ballroom 4-8 and we will have **FREE** food and drinks!

5 **Check out the schedule for the Center for Career Development** (CCD), which features several interactive small group sessions that focus on important topics for early career ATS members. This will include sessions with editors of the ATS journals regarding opportunities to get involved and tips for submitting your work for publication. The CCD also has **FREE** coffee, hors d'oeuvres, and happy hours throughout the conference (Page 13).

6 **The Faculty Development Series** is a series of informative talks by senior ATS members to provide career advice for fellows and post-docs who are within a few years of transitioning to their first faculty position (page 14).

7 **The Diversity Forum** will be held at 11:45 am - 1:15pm at the Hyatt Regency Dallas. **The Women's Forum** will be held at 11:45am-1:15pm on Monday, May 20 at the Hyatt Regency Dallas. These are both great **FREE** opportunities for networking. Advanced registration is suggested as space is limited.

8 **Join an ATS Assembly** based on your area of interest and attend the assembly meeting to learn more about how to get involved (Page 12). Each assembly also has a mentoring program to pair early-career members with senior mentors in your area (www.thoracic.org/go/mentoring-program).

9 **After the conference**, be sure to check out the ATS website for additional **FREE** resources such as conference materials, a suggested reading list for fellows, high-yield educational videos, and our grants resource guide. Additionally, new trainee members of the ATS get one year of **FREE** membership.

10 **The Members in Transition and Training (MITT)** committee is ALL about providing opportunities that advance the careers of trainees and early career members at ATS. Have a question or an idea? Reach out to us anytime via email (fellows@thoracic.org) or catch us at one of the Center for Career Development sessions.



NETWORKING EVENT

THE NETWORKING EXCHANGE FOR EARLY CAREER PROFESSIONALS



**COME MINGLE WITH COLLEAGUES, MENTORS AND PEERS
COMPLIMENTARY DRINKS AND APPETIZERS**

Saturday, May 18, 2019

Time: 5:30 - 6:30pm

Location: Omni Dallas Hotel, Trinity Ballroom 4-8

The event is FREE to paid conference registrants.

Sponsored by The Membership and Training Committee (MITT)

Questions? Contact Liz Guzman (lguzman@thoracic.org) or Rebecca Fisch (rfisch@thoracic.org)

Connect with Us! Use #ATSEarlyCareer

Dallas, TX
May 17 - May 22, 2019
conference.thoracic.org



ATS 2019
Where today's science meets tomorrow's care™

ROAD MAP

SUNDAY, MAY 19 SCHEDULE

MORNING SESSIONS Highlighted sessions are recommended by MITT for early career professionals.

Session Code	Title	Focus	Room
6:45 AM - 7:45 AM			
PCC1	PEDIATRIC CLINICAL CORE CURRICULUM: Control of Breathing Disorders, Obstructive Sleep Apnea		Dallas Ballroom A-C (Level 3), Omni Dallas Downtown
8:00 AM - 8:45 AM			
K1	ATS Keynote Series: WHEN EXPERTS DISAGREE: THE ART OF MEDICAL DECISION MAKING		Ballroom C One-Two (Level 2), KBHCCD
K2	ATS Keynote Series: K2. IMPLEMENTATION SCIENCE: HOW CAN IT SUPPORT HEALTH RESEARCH?		Ballroom C Three-Four (Level 2), KBHCCD
9:15 AM - 11:15 AM			
A1	CLINICAL YEAR IN REVIEW 1: Sepsis and Septic Shock, Health Disparities, COPD, Interventional Pulmonology		Hall A (Level 2), KBHCCD
A2	NEJM and Jama. Discussion On The Edge: Reports Of Recently Published Pulmonary Research		Room D163/D165/D170/D172 (Level 1), KBHCCD
A3	WHEN THERE IS NO RIGHT ANSWER: A PRO/CON DEBATE ON CONTROVERSIES IN ILD	Clinical Translational	Ballroom C Three-Four (Level 2), KBHCCD
A4	DO I HAVE TO? RE-EVALUATING COMMON PRACTICES IN THE ICU	Behavioral Clinical	Dallas Ballroom D/H (Level 3), Omni Dallas Downtown
A5	CELL FATE DETERMINATION IN THE LUNG IN HEALTH AND DISEASE: LOCATION AND NEIGHBORS MATTER		Ballroom D Two (Level 3), KBHCCD
A6	PAP FOR ALL OR PAP FOR FEW: CONTROVERSIES IN MANAGEMENT OF SLEEP-DISORDERED BREATHING	Clinical Translational	Room C155-C156 (Level 1), KBHCCD
A7	BREAKING THE PARADIGM: EARLY ORIGINS OF COPD	Basic Clinical Translational	Ballroom D One (Level 3), KBHCCD
A8	CROSSING THE BORDER: MILDLY INCREASED PULMONARY ARTERY PRESSURE AND THE NEW DEFINITION OF PULMONARY HYPERTENSION	Clinical	Ballroom C One-Two (Level 2), KBHCCD
A9	NOVEL BIOMARKERS FOR THE DIAGNOSIS, PHENOTYPING, AND MANAGEMENT OF PEDIATRIC LUNG DISEASES	Clinical Translational	Dallas Ballroom A-C (Level 3), Omni Dallas Downtown
A10	TREATING ASTHMA IN PATIENTS WITH OBESITY: THE NEED FOR A NEW APPROACH	Basic Behavioral Clinical Translational	Room D221/D225/D226 (Level 2), KBHCCD
A11	CRITICAL CARE 2.0: INTEGRATING BIG DATA, CLINICAL TRIALS, AND IMPLEMENTATION SCIENCE TO CREATE A LEARNING ICU SYSTEM	Clinical	Room C146 (Level 1), KBHCCD
A12	CAREGIVER BURDEN: BIDIRECTIONAL IMPACT OF PULMONARY, CRITICAL CARE, AND SLEEP DISORDERS ON THE ENTIRE FAMILY	Behavioral Clinical	Room C147/C148/C154 (Level 1), KBHCCD
A13	STATE OF THE ART TREATMENT OF TOBACCO DEPENDENCE	Clinical	Room D167/D174 (Level 1), KBHCCD
11:45 AM - 1:15 PM			
CC1	PULMONARY CLINICAL CORE CURRICULUM: Emerging Therapies for COPD, Preventing Readmission for COPD Exacerbations, The Use of New Biologic Agents in Asthma		Hall A (Level 2), KBHCCD

AFTERNOON SESSIONS

Session Code	Title	Focus	Room
2:15 PM - 4:15 PM			
A81	PEDIATRIC YEAR IN REVIEW	Clinical Translational	Dallas Ballroom A-C (Level 3), Omni Dallas Downtown
A82	CYSTIC FIBROSIS: HETEROGENEITY IN A MONOGENIC DISEASE	Clinical	Ballroom C One-Two (Level 2), KBHCCD
A83	GREAT CASES: CLINICAL, RADIOLOGIC, AND PATHOLOGIC CORRELATIONS BY MASTER PHYSICIANS	Clinical	Ballroom C Three-Four (Level 2), KBHCCD
A84	NEJM/JAMA -DISCUSSION ON THE EDGE: REPORTS OF RECENTLY PUBLISHED CRITICAL CARE RESEARCH		Room D163/D165/D170/D172 (Level 1), KBHCCD
A85	LIVING AND DYING BY LIPIDS: RESOLVING INFLAMMATION AND TEMPTING CELL FATE		Ballroom D Two (Level 3), KBHCCD
A86	MECHANOPHARMACOLOGY OF AIRWAY AND AIRWAY SMOOTH MUSCLE	Basic Clinical Translational	Ballroom D One (Level 3), KBHCCD
A87	KNOWLEDGE GAPS AND PATHWAYS FORWARD IN RV FAILURE RESEARCH: RECOMMENDATIONS FROM AN OFFICIAL ATS RESEARCH STATEMENT ON RV FAILURE	Clinical Translational	Room D167/D174 (Level 1), KBHCCD
A88	RETHINKING OXYGEN: GETTING THE RIGHT OXYGEN TO THE RIGHT PATIENT	Clinical	Room D162/D164 (Level 1), KBHCCD
A89	2019 IDSA/ATS COMMUNITY-ACQUIRED PNEUMONIA GUIDELINE: AN INTERACTIVE SESSION	Clinical	Ballroom A Three (Level 2), KBHCCD
A90	ICU-ACQUIRED WEAKNESS: A RAPID-FIRE DISCUSSION OF EMERGING ISSUES AND NEW INSIGHTS	Clinical Translational	Dallas Ballroom D/H (Level 3), Omni Dallas Downtown
A91	WHAT YOU CAN'T SEE MIGHT HURT YOU: THE INTERPLAY BETWEEN THE MICROBIOME AND IMMUNE INTERACTIONS IN LUNG DISEASE	Basic Translational	Room D220/D227 (Level 2), KBHCCD
A92	HEALTH IMPACTS OF MARIJUANA: STATE OF THE SCIENCE AND FUTURE DIRECTIONS		Ballroom A One (Level 2), KBHCCD

ROAD MAP

MONDAY, MAY 20 SCHEDULE

MORNING SESSIONS Highlighted sessions are recommended by MITT for early career professionals.

Session Code	Title	Focus	Room
6:45 AM - 7:45 AM			
PCC2	PEDIATRIC CLINICAL CORE CURRICULUM		Dallas Ballroom A-C (Level 3), Omni Dallas Downtown
8:00 AM - 8:45 AM			
K3	ATS Keynote Series: DATA SHARING IN THE CONTEXT OF CLINICAL TRIALS		Ballroom C One-Two (Level 2), KBHCCD
K4	ATS Keynote Series: UNRAVELLING THE MYSTERY OF BREATHLESSNESS IN COPD		Ballroom C Three-Four (Level 2), KBHCCD
9:15 AM - 11:15 AM			
B1	CLINICAL YEAR IN REVIEW 2: Sarcoidosis, Mycobacterial Infections, Asthma, ARDS		Hall A (Level 2), KBHCCD
B2	ENDOBRONCHIAL VALVE TREATMENT IN PATIENTS WITH ADVANCED EMPHYSEMA: IT'S TIME HAS COME	Clinical	Ballroom C One-Two (Level 2), KBHCCD
B3	FELLOWS CASE CONFERENCE	Clinical	Ballroom C Three-Four (Level 2), KBHCCD
B4	KEEPING MY CRITICALLY ILL PATIENT COMFORTABLE, AWAKE, ENGAGED, AND MOVING	Clinical Translational	Dallas Ballroom D/H (Level 3), Omni Dallas Downtown
B5	TIL DEATH DO US PART: CELL FATE AND OBSTRUCTIVE LUNG DISEASE	Basic Clinical Translational	Ballroom D Two (Level 3), KBHCCD
B6	BORN TOO SOON: THE EFFECTS OF PREMATURITY ON THE NEONATAL AND DEVELOPING LUNG	Basic Clinical Translational	Dallas Ballroom A-C (Level 3), Omni Dallas Downtown
B7	GLOBAL PERSPECTIVES ON CLIMATE CHANGE: IMPACT ON SUSCEPTIBLE POPULATIONS AND LOW-INCOME COUNTRIES	Basic Behavioral Clinical Translational	Trinity Ballroom 4/8 (Level 3), Omni Dallas Downtown
B8	ENSURING BROAD DISSEMINATION AND EQUITABLE ACCESS TO LUNG CANCER SCREENING: CHALLENGES AND OPPORTUNITIES	Behavioral Clinical	Ballroom A One (Level 2), KBHCCD
B9	ADDICTING A NEW GENERATION: JUULING, VAPING, HEAT NOT BURN, FLAVORINGS, AND THE EVIDENCE FOR WHY WE SHOULD BE VERY CONCERNED	Behavioral Clinical Translational	Room D220/D227 (Level 2), KBHCCD
B10	HUMAN LUNG CELL ATLAS: BEYOND SINGLE CELL RNA SEQUENCING	Basic Translational	Ballroom D One (Level 3), KBHCCD
B11	LUNG-OMICS: TO BOLDLY GO...	Basic Clinical Translational	Room D163/D165/D170/D172 (Level 1), KBHCCD
B12	HOT TOPICS IN MEDICAL EDUCATION: WHAT'S NEW IN '19	Behavioral	Dallas Ballroom G (Level 3), Omni Dallas Downtown
B13	PRESIDENT'S SYMPOSIUM: 50 YEARS OF PROGRESS IN PULMONARY SCIENCE		Room D221/D225/D226 (Level 2), KBHCCD
11:45 AM - 1:15 PM			
CC2	SLEEP MEDICINE CLINICAL CORE CURRICULUM: COPD/Asthma, Heart Failure, Obesity, Hypoventilation Syndrome		Hall A (Level 2), KBHCCD

AFTERNOON SESSIONS

Session Code	Title	Focus	Room
2:15 PM - 4:15 PM			
CC3	PULMONARY CLINICAL CORE CURRICULUM, The Evaluation and Management of Adult Bronchiolitis, Updates in Bronchiectasis, Approach to Eosinophilic Lung Disease, Lung Transplant in Patients with Obstructive Lung Disease		Hall A (Level 2), KBHCCD
B81	NURSING YEAR IN REVIEW: PATIENT AND FAMILY ENGAGEMENT		Room D162/D164 (Level 1), KBHCCD
B82	PRO/CON: THE CONUNDRUM OF MANAGING ACUTE PULMONARY EMBOLISM	Clinical	Ballroom C One-Two (Level 2), KBHCCD
B83	MANAGEMENT OF NEUROMUSCULAR RESPIRATORY FAILURE SYNDROMES: NIPPV FOR DAY, NIGHT AND THE SOCCER FIELD	Clinical	Ballroom C Three-Four (Level 2), KBHCCD
B84	CAN'T STOP OR WON'T STOP: THE ROLE OF CLINICAL INERTIA IN CRITICAL CARE MEDICINE	Behavioral Clinical	Dallas Ballroom D/H (Level 3), Omni Dallas Downtown
B85	THEY'VE GOT THE BEAT: CILIA IN DEVELOPMENT AND DISEASE	Basic Clinical Translational	Ballroom D Two (Level 3), KBHCCD
B86	PULMONARY REHABILITATION IN NON-COPD CHRONIC RESPIRATORY CONDITIONS	Clinical	Trinity Ballroom 4/8 (Level 3), Omni Dallas Downtown
B87	CROSSTALK BETWEEN AIRWAY EPITHELIUM AND TYPE 2 IMMUNITY IN ASTHMA	Basic	Ballroom D One (Level 3), KBHCCD
B88	MIGRANT AND REFUGEE MEDICINE: IMPLICATIONS FOR PULMONARY AND CRITICAL CARE CLINICIANS	Behavioral Clinical	Room D167/D174 (Level 1), KBHCCD
B89	CHALLENGES IN CONDUCTING AND INTERPRETING ARDS AND SEPSIS RANDOMIZED CLINICAL TRIALS	Behavioral Clinical	Dallas Ballroom A-C (Level 3), Omni Dallas Downtown
B90	BIG TOBACCO: LAWYERS, GUNS AND MONEY	Behavioral Clinical	Ballroom A Two (Level 2), KBHCCD
B91	HAVE A BIGGER IMPACT! EFFECTIVE STRATEGIES TO UTILIZE YOUR PROFESSIONAL EXPERTISE TO ADVOCATE FOR YOUR PATIENTS AND YOUR COMMUNITIES	Behavioral Clinical Translational	Room D163/D165/D170/D172 (Level 1), KBHCCD
B92	ATS FAMILY OF JOURNALS IN 2019	Basic Behavioral Clinical Translational	Room C146 (Level 1), KBHCCD

ROAD MAP

TUESDAY, MAY 21 SCHEDULE

MORNING SESSIONS

Highlighted sessions are recommended by MITT for early career professionals.

Session Code	Title	Focus	Room
6:45 AM - 7:45 AM			
PCC3	PEDIATRIC CLINICAL CORE CURRICULUM : Pulmonary Vascular Malformations,Pulmonary Lymphatic Disease		Dallas Ballroom A-C (Level 3), Omni Dallas Downtown
8:00 AM - 8:45 AM			
K5	ATS Keynote Series: DEVELOPING THE EVIDENCE FOR VALUE BASED CARE IN PULMONARY MEDICINE		Ballroom C One-Two (Level 2), KBHCCD
K6	ATS Keynote Series: ENHANCING DIVERSITY AND INCLUSION IN ACADEMIC MEDICINE		Ballroom C Three-Four (Level 2), KBHCCD
9:15 AM - 11:15 AM			
C1	CLINICAL YEAR IN REVIEW 3 : General Critical Care, ICU Rehabilitation, ILD, Tobacco Dependence		Hall A (Level 2), KBHCCD
C2	CLOSING THE EVIDENCE GAP IN LUNG DISEASE WITH REAL WORLD DATA	Behavioral Clinical	Ballroom C One-Two (Level 2), KBHCCD
C3	EVIDENCE IN ASTHMA COPD OVERLAP: CLINICAL AND MOLECULAR STUDIES TO ADVANCE TREATMENT	Clinical Translational	Ballroom C Three-Four (Level 2), KBHCCD
C4	WHEN THE SUN SETS: NIGHTTIME IN THE ICU	Behavioral Clinical	Dallas Ballroom D/H (Level 3), Omni Dallas Downtown
C5	DISCOVERING THE ROLE OF STEM CELL FATE IN LUNG INJURY AND FIBROSIS	Translational	Ballroom D Two (Level 3), KBHCCD
C6	THE FORGOTTEN CELL: RED BLOOD CELLS AS MODULATORS OF IMMUNITY	Basic Translational	Room C147/C148/C154 (Level 1), KBHCCD
C7	WHAT PULMONOLOGISTS NEED TO KNOW ABOUT CANCER IMMUNOTHERAPY	Clinical Translational	Ballroom A Two (Level 2), KBHCCD
C8	BRONCHIECTASIS: MOVING BEYOND THE VICIOUS CYCLE	Clinical Translational	Ballroom A Three (Level 2), KBHCCD
C9	DIFFICULT TO TREAT ASTHMA	Clinical	Dallas Ballroom A-C (Level 3), Omni Dallas Downtown
C10	LIFESPAN WEIGHT MANAGEMENT OF SLEEP DISORDERS: REAL, FEASIBLE OR JUST THEORY?	Behavioral Clinical	Room D221/D225/D226 (Level 2), KBHCCD
C11	FUTURE DIRECTIONS IN PAH RESEARCH: A PRO/CON DEBATE	Basic Translational	Room C155-C156 (Level 1), KBHCCD
C12	MACROPHAGES: LINEAGE, DIVERSITY, AND LUNG DISEASE	Basic Translational	Ballroom D One (Level 3), KBHCCD
C13	CLIMATE CHANGE AND RESPIRATORY HEALTH: WIDENING U.S. DISPARITIES	Clinical Translational	Room D163/D165/D170/D172 (Level 1), KBHCCD

AFTERNOON SESSIONS

Session Code	Title	Focus	Room
2:15 PM - 4:15 PM			
CC4	SLEEP MEDICINE CLINICAL CORE CURRICULUM: Circadian Disorders: Advanced, Delayed, Non-24, Circadian Disorders - Shift work, Jet Lag, High Risk Populations, Pediatric Sleep		Hall A (Level 2), KBHCCD
C82	BEYOND THE INITIAL TREATMENT OF SARCOIDOSIS: HOW TO APPROACH LONG-TERM CLINICAL MANAGEMENT DECISIONS	Clinical	Ballroom C One-Two (Level 2), KBHCCD
C83	PEDIATRIC CLINICAL CHEST ROUNDS	Clinical	Dallas Ballroom A-C (Level 3), Omni Dallas Downtown
C84	CLINICAL TRIALS IN THE CRITICALLY ILL: ECMO AS A CAUTIONARY TALE	Clinical	Dallas Ballroom D/H (Level 3), Omni Dallas Downtown
C85	SCIENTIFIC BREAKTHROUGHS		Ballroom D Two (Level 3), KBHCCD
C86	LUNGMAP-ING CELL LINEAGES IN HUMAN DEVELOPMENT AND DISEASE	Basic Translational	Trinity Ballroom 4/8 (Level 3), Omni Dallas Downtown
C87	PHYSIOLOGICALLY-GUIDED MECHANICAL VENTILATION	Basic Clinical Translational	Ballroom D One (Level 3), KBHCCD C
C88	COMPLEMENT AS A NOVEL TARGET TO MITIGATE LUNG DISEASE	Basic Translational	Room D220/D227 (Level 2), KBHCCD
C89	TRANSLATIONAL DEVELOPMENTS IN TB: TOWARDS IMPROVING PREVENTION AND MANAGEMENT STRATEGIES	Translational	Ballroom A Three (Level 2), KBHCCD
C90	BENCH TO BEDSIDE: HOW DIETARY N3-PUFAS MODULATE THE PULMONARY RESPONSE TO ENVIRONMENTAL EXPOSURES	Basic Clinical Translational	Room D163/D165/D170/D172 (Level 1), KBHCCD
C91	IMPROVING CARE QUALITY WHILE REDUCING COST: IS HIGH VALUE CARE FOR COPD ACHIEVABLE?	Behavioral Clinical	Room C155-C156 (Level 1), KBHCCD
C92	ATS CLINICAL PRACTICE GUIDELINES: CLINICAL PRACTICE ON THE CUTTING EDGE	Clinical Translational	Room C147/C148/C154 (Level 1), KBHCCD

ROAD MAP

WEDNESDAY, MAY 22 SCHEDULE

MORNING SESSIONS Highlighted sessions are recommended by MITT for early career professionals.

Session Code	Title	Focus	Room
6:45 AM - 7:45 AM			
PCC4	Complications in Hemapoetic Cell Transplant, Complications in Solid Organ Transplant		Dallas Ballroom A-C (Level 3), Omni Dallas Downtown
8:00 AM - 8:45 AM			
K7	WHAT SHOULD PULMONOLOGISTS KNOW ABOUT ARTIFICIAL INTELLIGENCE AND MACHINE LEARNING?		Ballroom C One-Two (Level 2), KBHCCD
9:15 AM - 11:15 AM			
D1	CLINICAL YEAR IN REVIEW 4: Lung Cancer, Palliative Medicine, Pulmonary Hypertension, Medical Education		Hall A (Level 2), KBHCCD C
D2	STATE OF THE ART PLEURAL DISEASE MANAGEMENT: CLINICAL TRIALS CHANGING CARE PRACTICE	Clinical	Ballroom C One-Two (Level 2), KBHCCD
D3	RURALITY IN COPD: DEFINING THE PROBLEM AND DEPLOYING NOVEL CARE DELIVERY APPROACHES	Clinical	Ballroom C Three-Four (Level 2), KBHCCD
D4	BIG DATA AND CLINICAL TRIALS: FRIENDS, FOES, OR FRENEMIES?	Behavioral Clinical Translational	Dallas Ballroom D/H (Level 3), Omni Dallas Downtown
D5	SLEEPING WITH THE ENEMY: EXPLORING THE IMPACT OF SLEEP DISORDERED BREATHING ON CANCER	Basic Clinical Translational	Room D163/D165/D170/D172 (Level 1), KBHCCD
D6	SITES FOR PULMONARY REHABILITATION: WHERE CAN AND SHOULD IT BE PERFORMED?		Room D162/D164 (Level 1), KBHCCD C
D7	EXOSOMES: WEAPONS OF MASS DESTRUCTION	Basic Translational	Room D221/D225/D226 (Level 2), KBHCCD
D8	ENVIRONMENTAL EXPOSURES, THE HUMAN MICROBIOME, AND LUNG DISEASE	Basic Clinical Translational	Ballroom A Two (Level 2), KBHCCD
D9	HOST DIRECTED THERAPY FOR TUBERCULOSIS: THEORY AND CURRENT EVIDENCE	Translational	Ballroom A Three (Level 2), KBHCCD
D10	BUILDING BLOCKS OF IMPLEMENTATION: HOW TO IMPLEMENT ICU EVIDENCE-BASED CARE	Behavioral Clinical Translational	Trinity Ballroom 4/8 (Level 3), Omni Dallas Downtown
11:45 AM - 1:15 PM			
CC5	CRITICAL CARE CLINICAL CORE CURRICULUM, Sodium Disorders, Continuous Renal Replacement Therapy, Toxicology		Room D163/D165/D170/D172 (Level 1), KBHCCD

AFTERNOON SESSIONS

Session Code	Title	Focus	Room
1:30 PM - 3:30 PM			
CC6	CRITICAL CARE CLINICAL CORE CURRICULUM: Sedation, Analgesia, and Delirium, Analgesia and Delirium, Exacerbations of Obstructive Lung Disease, Management of Mechanical Ventilation in 2019, Neuromuscular Respiratory Failure		Room D163/D165/D170/D172 (Level 1), KBHCCD
D82	AUTOIMMUNE ASSOCIATED ILD: A CASE BASED APPROACH TO DIAGNOSIS AND TREATMENT	Clinical	Ballroom C One-Two (Level 2), KBHCCD
D83	NEW ADVANCES IN THE BRONCHOSCOPIC DIAGNOSIS AND TREATMENT OF LUNG CANCER	Clinical	Ballroom C Three-Four (Level 2), KBHCCD
D84	REDEFINING ICU SURVIVORSHIP: PREVENTION, RECOVERY AND REINTEGRATION	Clinical	Dallas Ballroom D/H (Level 3), Omni Dallas Downtown
D85	UNFOLDING CIRCADIAN CLOCKS AND ER STRESS IN LUNG DISEASES	Basic Clinical Translational	Ballroom D One (Level 3), KBHCCD
D86	METABOLISM AS A LINK BETWEEN LUNG CANCER AND ITS MICROENVIRONMENT	Basic Translational	Ballroom A One (Level 2), KBHCCD
D87	BEYOND THE RIGHT HEART CATHETERIZATION: QUANTITATIVE METHODS FOR INTERROGATING THE PULMONARY CIRCULATION	Clinical Translational	Room D162/D164 (Level 1), KBHCCD
D88	NEW-TROPHILS: AN OLD CELL WITH NEW TRICKS IN LUNG DISEASE	Basic Translational	Room D221/D225/D226 (Level 2), KBHCCD
D89	CONTROVERSIES IN PEDIATRIC PULMONOLOGY	Basic Clinical Translational	Dallas Ballroom A-C (Level 3), Omni Dallas Downtown
D90	IMPROVING (LUNG) HEALTH IN PEOPLE LIVING WITH HIV	Basic Clinical Translational	Ballroom A Three (Level 2), KBHCCD
D91	CHAIR SYMPOSIUM: USING THE BASIC BIOLOGY OF IPF TO DESIGN NEW THERAPIES		Room C147/C148/C154 (Level 1), KBHCCD

ROAD MAP

HIGHLIGHTS ONLINE!

FOR PEDIATRIC HIGHLIGHTS, VISIT
[conference.thoracic.org/program/resources/2019/
road-map-pediatric-track.pdf](http://conference.thoracic.org/program/resources/2019/road-map-pediatric-track.pdf)



FOR SLEEP HIGHLIGHTS, VISIT
[conference.thoracic.org/program/resources/2019/
road-map-sleep-track.pdf](http://conference.thoracic.org/program/resources/2019/road-map-sleep-track.pdf)



**COMING THIS MAY
AT THE ATS CENTER**

**Let's
Discover
Together**



ATS 2019
Where today's science meets tomorrow's care™

Dallas, TX
May 17 - May 22, 2019
conference.thoracic.org

IMPORTANT EVENTS FOR EARLY CAREER PROFESSIONALS

ATS Journals at the Center for Career Development

AJRCCM, AJRCMB and Annals ATS:

Monday, May 20 from 11:00 – 1:00 p.m.

The AJRCCM, AJRCMB, and Annals ATS will have a combined session in the Center for Career Development on Monday, May 20. These workshops provide attendees the opportunity to receive firsthand advice from our Editors on how to be a successful peer reviewer as well as how to get involved with the ATS Journals family.

Fellows Case Conference

Monday, May 20, 2019

Time: 9:15 – 11:15 a.m.

Location: Ballroom C Three-Four (Level 2)

Key Bailey Huchison Convention Center Dallas

The Fellows Case Conference will consist of unique cases presented and discussed by fellows to a panel of clinical experts. Cases will feature clear clinical, radiographic, and pathologic findings and the discussions will yield important teaching for both fellows and seasoned clinicians.

Amberson Lecture

Sunday, May 19, 2019

Time: 4:30 – 5:45 p.m.

Location: Hall A (Level 2)

Key Bailey Huchison Convention Center Dallas

The Amberson Lecturer is an individual with a career of major lifetime contributions to clinical or basic pulmonary research and/or clinical practice. The Lecture is given in honor of James Burns Amberson, an international authority on chest disease and tuberculosis.

Lecturer: Jahar Bhattacharya, MD, DPhil, New York, NY

Recognition Awards for Scientific Accomplishments

Monday, May 20, 2018

Time: 2:15 – 4:15 p.m.

Location: Ballroom A Three (Level 2)

Key Bailey Huchison Convention Center Dallas

The Recognition Award for Scientific Accomplishments is given to individuals for outstanding scientific contributions in basic or clinical research to enhance the understanding, prevention and treatment of lung disease. Those considered for the award are recognized for either scientific contributions throughout their careers or for major contributions at a particular point in their careers.

Chairing: A.J. Halayko, PhD, Winnipeg, Canada

Awardees: Joanna Floros, PhD, Hershey, PA

Nicholas W. Lukacs, PhD, Ann Arbor, MI

Theodore J. Standiford, MD, Ann Arbor, MI

Prabir Ray, PhD, Pittsburgh, PA

Trudeau Medal

Sunday, May 19, 2019

Time: 9:15 – 11:15 a.m.

Location: Hall A (Level 2)

Key Bailey Huchison Convention Center Dallas

The Trudeau Medalist is an individual with lifelong major contributions to prevention, diagnosis and treatment of lung disease through leadership in research, education, or clinical care. This award was established in 1926 and is given in honor of Edward Livingston Trudeau, a founder and the first president of the American Lung Association.

Awardee: Jacob Sznajder, MD, DSc, Chicago, IL

Distinguished Achievement Award

Sunday, May 19, 2019

Time: 9:15 – 11:15 a.m.

Location: Hall A (Level 2)

Key Bailey Huchison Convention Center Dallas

The Distinguished Achievement Award is given to individuals who have made outstanding contributions to fighting respiratory disease through research, education, patient care, or advocacy.

Awardees: John Hansen-Flaschen, MD, Philadelphia, PA

Meir Kryger, MD, New Haven, CT

ATS LGBTQ and Allies Interest Group Reception

The LGBTQ and Allies Interest Group was formed in 2010 to recognize the LGBTQ community within the ATS. The group meets annually at the ATS International Conference with a social gathering which allows members to network and interact in an informal and open environment. We hope this affords junior members an opportunity for mentorship and advice while facilitating potential collaborations amongst all in the group.

Please RSVP to Breana Portelli (bportelli@thoracic.org).

THE ATS AT A GLANCE

ATS AT A GLANCE

When the members of the MITT Committee first met, we realized there was a lot about the ATS that we didn't know. To make the ATS more accessible, we created the ATS 101 section. We hope this section will give you some ideas on how you can become more active within the organization.

How does the ATS work?

The ATS is a member-driven organization, meaning that all decisions are effectively made by members. The day-to-day function of the ATS relies on a dedicated staff of more than 90 employees, who work in offices in New York and Washington, D.C. The Society's leadership is represented by an Executive Committee comprised of the executive director and five elected officers.

Each year, the Society's Nominating Committee selects two candidates from solicited nominations and then the membership votes for who should become the next Secretary-Treasurer. The election results are announced in the ATS News and other Society communications in April.

Why should I get involved in the ATS?

As an ATS member, you can have a direct impact on pulmonary, critical care, and sleep medicine both nationally and internationally. Active members help the Society to develop statements and guidelines, create new educational programs, prioritize content for existing activities and guide the political voice of the ATS.

ATS leaders are actively soliciting the voice of junior members, so the best time to get involved is now!

What are the Assemblies?

The 14 ATS Assemblies and three sections are at the heart of the Society's mission. Through these groups, ATS members review, analyze and disseminate the latest basic science, translational, and clinical information. To learn more about Assemblies please go to <http://www.thoracic.org/members/assemblies/>.

What is an ATS Committee?

Committees are appointed groups that shape and carry out the ATS's many initiatives. The Society's president-elect appoints new committee members in the months preceding each International Conference. To learn more about committees and how to get involved please go to <http://www.thoracic.org/members/committees/index.php>.

What is the Public Advisory Roundtable (PAR)?

In February 2001, former ATS president William J. Martin, II, MD, founded ATS PAR, the arm of the ATS that incorporates patient and family perspectives into the Society's activities. Today, ATS PAR comprises 15 member organizations that represent patients affected by respiratory diseases, critical illnesses, and sleep-related conditions. The group collaborates with the ATS to advance their shared educational, research, patient care and advocacy missions. To learn more please go to <http://www.thoracic.org/patients/par/index.php>.

How can I be more involved during the International Conference?

International Conference programming, for the most part, is driven by ATS Assemblies. Each Assembly is allotted a specific number of slots for each type of session and its Program Committee ranks various submissions. A direct way to be a part of the conference is to submit your own symposium suggestion to the appropriate assembly during the "Call for Input" period, which takes place immediately after the conference. To increase the chances of acceptance, ask the assembly program committee chair and/or its members for advice.

Remember, you shouldn't be discouraged by rejection. Assemblies often receive many submissions for only a few symposia slots. Get feedback and try again. Persistence pays off!

Where can I access CME?

The ATS is accredited by the Accreditation Council for Continuing Medical Education (ACCME) to provide continuing medical education for physicians.

The designation of AMA PRA Category 1 Credit(s)TM per session will be available in January and in the Final Program. Physicians should only claim the credit commensurate with the extent of their participation in the activity. This live activity has been planned and implemented in accordance with the essential areas and policies of the ACCME and are free from the control of commercial interests. The ATS is unable to offer AMA PRA Category 1 Credit(s)TM for sessions that include presentations made by industry-employed speakers if the topic of their presentation relates to a product or business line of their employer. Most of the major symposia, postgraduate courses, workshops and seminars are eligible for AMA PRA Category 1 Credit(s)TM.

Where can I go for more information for Trainees in the field?

The ATS International Conference is one of the largest gatherings for pulmonary, critical care and sleep medicine professionals in the world. For those starting their careers or have recently transitioned into to a career in pulmonary, critical care or sleep, the International Conference is a great opportunity to learn more about the field. To learn more about programs for Trainee please go to <http://www.thoracic.org/members/membership/join-the-ats/special-membership-programs.php>

If you are interested in getting involved, send an email to: fellows@thoracic.org.

ATS STAFF FOR MEMBERS IN TRANSITION AND TRAINING

Elizabeth Guzman

Senior Manager, Education Projects and Programs
Phone: 212-315-8627 • Email: lguzman@thoracic.org

Rebecca Fisch

Coordinator, Education Programs
Phone: 212-315-8629 • Email: rfisch@thoracic.org



ATS 2019
Where today's science meets tomorrow's careTM

Dallas, TX
May 17 - May 22, 2019
conference.thoracic.org

ATS MEMBERSHIP MEETINGS

ATS Assembly Membership Meetings

Assemblies are the heart of the ATS and provide a great entry point to the organization for trainees, junior faculty, and new ATS members. Among other activities, the Society's 14 assemblies are responsible for contributing to the programming and content of the International Conference.

One of the easiest ways to get involved is to attend one or more of the annual Assembly Membership Meetings that you feel best fits your clinical and research interests. Held during the International Conference, these meetings give you the chance to meet the Assembly's leaders in person. If you are interested in becoming involved but find you cannot attend a meeting, you can also contact Assembly leaders by email after the conference.

Get Involved in ATS Assemblies

Do you often wonder how the ATS and its Assemblies really work? Would you like to get more involved? This is your chance! You can now register here to become more involved in the ATS and its Assemblies. There are many ways to grow within ATS and the Assemblies are a great starting point. Complete the form to get started at: <http://www.thoracic.org/members/assemblies/get-involved-with-ats.php>



Sunday, May 19

Assembly Membership Meetings

6:30 - 8:30 p.m.

Location: Hyatt Regency Dallas

Behavioral Science and Health Services Research (BSHSR)

Chair: J. Daryl Thornton, MD, MPH

Website: thoracic.org/assemblies/bshsr/index.php

Pediatrics (PEDS)

5:30 - 7:30pm

Chair: Stephanie Davis, MD

Incoming Assembly Chair: Paul E. Moore, MD

Website: thoracic.org/assemblies/peds/index.php

Monday, May 20

Assembly Membership Meetings

Time: 4:30-7:00pm

Location: Hyatt Regency Dallas

Allergy, Immunology & Inflammation (AII)

Chair: Bethany Moore, PhD

Incoming Assembly Chair: Jay K. Kolls, MD

Website: thoracic.org/assemblies/aai/index.php

Clinical Problems (CP)

Chair: MeiLan K. Han, MD, MS

Website: thoracic.org/assemblies/cp/index.php

Critical Care (CC)

Chair: John Kress, MD

Incoming Assembly Chair: Renee D. Stapleton, MD, PhD

Website: thoracic.org/assemblies/cc/index.php

Environmental, Occupational and Population Health (EOPH)

Chair: Howard M. Kipen, MD, MPH

Incoming Assembly Chair: Stephanie London, MD, DrPH

Website: thoracic.org/assemblies/eoh/index.php

Microbiology, Tuberculosis & Pulmonary Infections (MTPI)

Chair: Kristina A. Crothers, MD

Website: thoracic.org/assemblies/mtpi/index.php

Nursing (NUR)

Chair: Linda Chlan, PhD, RN

Website: thoracic.org/assemblies/nur/index.php

Pulmonary Circulation (PC)

Chair: Karen Fagen, MD

Incoming Assembly Chair: Anna Hemnes, MD

Website: thoracic.org/assemblies/pc/index.php

Pulmonary Rehabilitation (PR)

Chair: Richard Casaburi, MD

Incoming Assembly Chair: Anne Holland, PT, PhD

Website: thoracic.org/assemblies/pr/index.php

Respiratory Cell & Molecular Biology (RCMB)

Chair: Melanie Koenigshoff, MD, PhD

Website: thoracic.org/assemblies/rcmb/index.php

Respiratory Structure & Function (RSF)

Chair: Gwen S. Skloot, MD

Website: thoracic.org/assemblies/rsf/index.php

Sleep & Respiratory Neurobiology (SRN)

Chair: Sanjay Patel, MD

Incoming Assembly Chair: Mihaela Teodorescu, MD, MS

Website: thoracic.org/assemblies/srn/index.php

Thoracic Oncology (TO)

Chair: M. Patricia Rivera, MD

Incoming Assembly Chair: Lynn T. Tanoue, MD

Website: thoracic.org/members/assemblies/assemblies/thoracic-oncology/

CENTER FOR CAREER DEVELOPMENT (CCD) SCHEDULE OF EVENTS

Sunday, May 19 –Tuesday, May 21, 2019

7:00 AM – 5:00 PM

Kay Bailey Hutchison Convention Center Dallas

Hall B (Level 2)

The Center for Career Development is a professional networking and career development forum for early career professionals (medical students, residents, fellows, post docs, other allied healthcare and research professionals) in training or transitioning from training in Pulmonary, Critical Care or Sleep Medicine. Each day, the CCD features informal workshops aimed at enhancing the professional development for all health care professionals. The sessions in the CCD are a unique and valuable opportunity for YOU to interact with experts in PCCM and have your questions answered about career development topics that are important to you!

Complimentary Breakfast Everyday 7:00 AM

Sunday, May 19, 2019	Monday, May 20, 2019	Tuesday, May 21, 2019
<p>11:00 AM – 12:00 PM Tips and Tricks for Getting the Most Out of ATS 2019 Speakers: Laura Crotty Alexander, MD; Megan Ballinger, PhD</p>	<p>11:00 AM – 1:00 PM AJRCCM, AJRCMB, AnnalsATS Combined Journal Session Jadwiga Wedzicha, MD Paul Schumacker, PhD David Lederer, MD Gregory Downey, MD Susanne Herold, MD, PhD</p>	<p>11:00 AM – 12:00 PM How to Teach Procedures Presenters: Anna Brady, MD; Darlene Nelson, MD; Nitin Seam, MD; Morgan Soffler, MD; Jared Chiarchiaro, MD; Sarah Beesley, MD; Erin Raci Wetherbee, MD</p>
<p>12:00 – 1 PM How to Come up with a Novel Research Idea Speakers: David Chu, MD; Carolyn Calfee, MD; Richard Johnston, PhD</p>		<p>12:00 – 1 PM How to Make the Most Out of Your Mentor Speakers: Diana Kelm, MD; Subani Chandra, MD</p>
<p>1:00 – 2:00 PM How to Effectively Manage Your Time (and Your Email) Speakers: Jennifer McCallister, MD; Graham Carlos, MD; Angela Rogers, MPH, MD</p>	<p>1:00 – 2:00 PM How to Deal with Professional Conflicts Speakers: Monica Kraft, MD; Trish Kritek, MD</p>	<p>1:00 – 2:00 PM How to Lead Teams Speakers: Jesse Roman, MD; Naftali Kaminski, MD; Renee Stapleton, MD, PhD</p>
<p>2:00 – 3:00 PM Coaching: A Better Way to Think About Giving Feedback Speakers: Peter Lenz, MD; Janae Heath, MD; Shyoko Honiden, MD; Emer Kelly, MD</p>	<p>2:00 – 3:00 PM Effective Strategies for Writing and Publishing Your Manuscript Speakers: Avi Cooper, MD; Michelle Sharp, MD, MHS; Greg Downey, MD</p>	<p>2:00 – 3:00 PM Using Technology to Your Advantage in Academic Medicine Speakers: Nancy Stewart, DO; Kerri Johansson, MD, MPH; Chris Worsham, MD; Sheetal Gandotra, MD</p>
<p>3:00 – 4:00 PM Career Paths in MedEd: From Getting Buy-in to Developing Your Educators' Portfolio Speakers: Kathryn Robinett, MD; Anna Neumeier, MD</p>	<p>3:00 – 4:00 PM Get Your Paper Out - Writing Productivity for Busy Academicians Speakers: Pat Camp, PhD, PT; Molly Hayes, MD</p>	<p>3:00 – 4:00 PM International Medical Graduates Interested in Academic Medicine Speakers: Viren Kaul, MD; Pratibha Kaul, MD; Muhammad Sameed, MD</p>
<p>4:00 – 5:00 PM TEACH/Clinician- Educator Networking Hour</p>	<p>4:00 – 5:00 PM Early Career Professionals Networking Hour</p>	<p>4:00 – 5:00 PM IMG Networking Hour</p>

Professional Networking from 4:00 – 5:00 PM

Each afternoon, the CCD will host a Networking Hour, which will include FREE cocktails and appetizers. All medical students, residents, fellows, post docs, other allied healthcare and research professionals are welcome to stop in and network with peers.

ATS FACULTY DEVELOPMENT SERIES



Hosted by the Members in Training & Transition Committee (MITT)

6:45 – 7:45 a.m.

Location: Omni Dallas Downtown, Katy Trail (Level 2)

**Seminar 1: Faculty Promotion and Tenure:
Unraveling the "Faculty Handbook"**

Date: Monday, May 20, 2019

Panelists: Susanna McColley, MD (Ann and Robert H. Lurie Children's Hospital of Chicago); Erica Herzog, MD (Yale University); Irina Petrache, MD (National Jewish Health)

Moderator: Sakshi Dua, MD; MITT Committee Member

**Seminar 2: Using Digital Scholarship Strategically
for Career Advancement**

Date: Tuesday, May 21, 2019

Panelists: Nancy Stewart, DO (University of Nebraska); Marjorie Steigler, MD (University of North Carolina); Christopher Carroll, MD, ATSF (Connecticut Children's Medical Center)

Moderators: Viren Kaul, MD; MITT Committee Member

**Seminar 3: Negotiating for your Future:
Skills and Strategies for Success**

Date: Wednesday, May 22, 2019

Panelists: Marie M. Budev, DO, MPH, FCCP (Cleveland Clinic); Veena B. Antony, MD (University of Alabama at Birmingham); Joshua Denson, MD (Tulane); Stephen Liggett, MD (University of South Florida)

Moderators: Nirmal Sharma, MD; MITT Committee Member

**WHO WILL
BENEFIT FROM
THESE SESSIONS?**

Clinical and research fellows, post-doctoral fellows, residents, and early career faculty starting a career in academic pulmonary, allergy, critical care, and/or sleep medicine who are interested in gaining practical tools needed to enhance academic success.

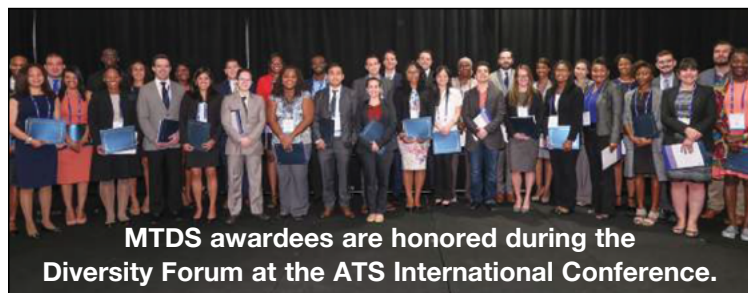
**ATTENDANCE IS ON
A FIRST-COME,
FIRST-SERVE BASIS.**

Dallas, TX
May 17 - May 22, 2019
conference.thoracic.org



ATS 2019
Where today's science meets tomorrow's care™

DIVERSITY FORUM / WOMEN'S FORUM



MTDS awardees are honored during the Diversity Forum at the ATS International Conference.

Diversity Forum

Sunday, May 19, 2019

Time: 11:45 a.m. - 1:15 p.m.

**Hyatt Regency Dallas, Landmark D Ballroom,
Lobby Level**

The focus of this forum is to discuss diversity among health care professionals today and to address the lack of underrepresented minorities in respiratory medicine. We are pleased to welcome Marc Nivet, EdD, MBA, as our speaker. Mr. Nivet is EVP of Institutional Advancement, University of Texas Southwestern Medical Center, Dallas, and former Chief Diversity Officer at the Association of American Medical Colleges (AAMC).

At this forum 40 individuals will also be recognized and presented with the 2019 Minority Trainee Development Scholarships (MTDS). The MTDS is designed to support travel for trainees of underrepresented minorities to attend the ATS International Conference. Each MTDS recipient is an author of an abstract accepted for presentation at the ATS 2019 International Conference. The awards are based on the quality of science, the contribution of the trainee to the project and the potential impact of the award on the trainee's career development.

New this year: The ATS Health Equality Fellowship will also be given out at this forum.

Pre-registration is recommended although seats are often available on-site. There is no charge to attend, and lunch will be served.

Women's Forum

Monday, May 20, 2019

Time: 11:45 a.m. - 1:15 p.m.

**Hyatt Regency Dallas,
Landmark D Ballroom, Lobby Level**

The focus of the annual Women's Forum is to recognize the achievements and support the advancement of women in pulmonary, critical care, and sleep medicine and research. The forum provides a valuable opportunity to meet and network with other women and leaders of the ATS.



This year we welcome Lorraine Ware, MD, professor of medicine at Vanderbilt University Medical Center, Nashville, TN. She will be joined by her former mentee, Julie Bastarache, MD, assistant professor of medicine, also

of Vanderbilt. They will discuss issues that are relevant to female medical professionals and talk about the value of the mentor-mentee relationship, followed by a question and answer period.

In addition, the 2019 Elizabeth A. Rich, MD Award will be presented to a female ATS member who has made significant achievements in the practice or science of a respiratory-related field of medicine and has demonstrated leadership in her field and dedicated mentorship of her junior colleagues. This year we are honored to present this award to Monica Kraft, MD, ATSF, professor of medicine at the University of Arizona Health Sciences Center in Tucson, AZ. Dr. Kraft will also speak at the forum.

Pre-registration is recommended although seats are often available on-site. There is no charge to attend, and lunch will be served. Men, as well as women, are welcome to attend this program!

Both forums will be hosted by Janet S. Lee, MD, chair of the ATS Membership Committee.



ATS 2019
Where today's science meets tomorrow's care™

**Dallas, TX
May 17 - May 22, 2019
conference.thoracic.org**

BEAR CAGE

The American Thoracic Society is pleased to invite you to:

BEAR Cage
(Building Education to Advance Research)

Monday, May 20, 2019 1-3pm
Science & Innovation Center

Hosted by the ATS Drug Device Discovery and Development (DDDD) Committee, the 5th Annual BEAR Cage (Building Education to Advance Research) competition features early career investigators who submitted an innovative clinical or translational research proposal for the opportunity to participate in the live event at ATS 2019. Join us to see the top three finalists competitively “pitch” their proposals to a panel of translational science experts representing academia, industry, and governmental sectors.

Come support and cheer on the finalists as they compete for the \$10,000 grand prize!
All are encouraged and welcome to attend.

2019 BEAR Cage Finalists



Adrienne Campbell-Washburn, PhD
National Heart, Lung, and Blood Institute
(NHLBI)
Functional Lung MRI



Scott M. Gordon, PhD
University of Kentucky
*Targeting Pulmonary Protease Activity
with an HDL-Binding Protease
Inhibitor Peptide*



Jasleen Pannu, MD
Ohio State University
*Steerable Electromagnetic Navigation
Guided Endobronchial Radial Ultrasound
with Biopsy Needle*

The goal of this unique event is to promote productive discussion of these innovative research ideas in the setting of a fun, yet competitive, forum promoting opportunities for collaboration and mentorship.

For more information, please contact DDDD@thoracic.org



ATS 2019
Where today's science meets tomorrow's care™

**AMERICAN THORACIC SOCIETY
INTERNATIONAL CONFERENCE**

dallas
tx

ATS 2019 SCIENCE & INNOVATION CENTER

The Science & Innovation Center, located at the **Kay Bailey Hutchison Convention Center Dallas, Hall B (Level 2)**, is a forum for scientists and researchers to meet, network, learn, and rest. The Science & Innovation Center is organized by representatives of the Assemblies on: Allergy, Immunology and Inflammation (All), Pulmonary Infections and Tuberculosis (PI-TB), Respiratory Cell and Molecular Biology (RCMB), and Respiratory Structure and Function (RSF).

HOURS: + Sunday, May 19 - Tuesday, May 21 – 7a.m.- 5p.m. + Wednesday, May 22 – 7a.m.- 1p.m.

DAILY:

+ Complimentary breakfast served at 7a.m. + Light refreshments served + Informal networking & rest area all day

Sunday, May 19	Monday, May 20	Tuesday, May 21
7:15 - 8:00 a.m. ATS 101: Cell Fate Jason Rock, PhD, Boston University	7:15 - 8:00 a.m. ATS 101: Neural Control of Inflammation Brenda Marsh, MD, PhD, OHSU	7:15 - 8:00 a.m. Early Career Professionals Coffee Corner
8:15 - 9:15 a.m. Navigating ATS Julie Ledford, PhD, University of Arizona	8:15 - 9:15 a.m. Setting up a Lab Phil Verhoef, MD, PhD, University of Chicago	8:15 - 9:15 a.m. Mentorship: A Key to Success Laura Crotty-Alexander, MD, University of California at San Diego Anne Sperling, PhD, University of Chicago
9:15 - 10:00 a.m. PRDS Orientation	9:15 - 10:00 a.m. Hiring Lab Management Chad Steele, PhD, Tulane University	9:15 - 10:00 a.m. Building Your Track Record for Career Success Greg Downey, MD, National Jewish Health
10:15 - 11:00 a.m. ATS 101: RNA Seq Jay Kolls, MD, Tulane University Naftali Kaminski, MD, Yale University	10:15 - 11:00 a.m. ATS 101: Imaging Yan Bai, MD, Harvard University Steven Rowe, MD, University of Alabama	10:15 - 11:00 a.m. ATS Foundation Grants Erin Marie Nebel, ATS
11:00 - 11:45 a.m. Lunch & Learn: RNA Seq Data	11:00 - 11:45 a.m. Lunch & Learn: Imaging	11:00 - 11:45 a.m. NIH Grants/Working with Industry Taylor Cohen, PhD, MedImmune Lora Reineck, MD, NIH Ghenima Dirami, PhD, NIH
12:00 - 3:00 p.m. Rising Star and SIC Abstract Awards	12:00 - 12:45 p.m. From Innovative Ideas to Clinical Trials Hector Ortega, MD, Gossamer Bio David Lagares, PhD, Harvard Tim Watkins, MD, Gilead	12:00 - 12:45 p.m. Lunch & Learn: Grants and Funding
3:00 - 5:00 p.m. PhD and Basic Science Reception	1:00 - 3:00 p.m. BEAR CAGE COMPETITION 	1:00 - 1:45 p.m. Bridging the Gap (MD Perspective) Josh Englert, MD, Ohio State University John Christman, MD, Ohio State University
ATS 2019 Let's Discover Together	3:30 - 4:30 p.m. Minority Trainee Development Scholarship Reception	1:45 - 2:45 p.m. Bridging the Gap (PhD Perspective) Beth Moore, PhD, University of Michigan Megan Ballinger, PhD, Ohio State University
		3:00 - 4:30 p.m. Relax and Recharge

May 17 - May 22, 2019 | conference.thoracic.org

SOCIAL MEDIA PLATFORMS

Get Social!

The ATS and The Members in Training Committee (MITT) have created social media platforms specifically for early career professionals!

These accounts serve to keep you all updated on the latest news in medical education, career development, ATS News relevant to early career professionals. Join the #ATS2019 Instagram Contest!

Join the #ATS2019 Instagram Contest!

CONTEST RULES:

1. Follow [@atscommunity](#) on Instagram.
2. Post a photo from [#ATS2019](#) and tell us what you like best about our conference.
3. Use [#ATS2019](#) in your post.

Three winners will be chosen randomly each day (Friday, May 17 - Wednesday, May 22) and will be notified via Instagram DM. Contestants must be attending ATS 2019. Winners photos will be regrammed on the ATS Instagram feed. Pick up your prizes at the ATS office.

[@atsearlycareer](#)



"Follow" us on Twitter



[@atsearlycareer](#)

"Follow" us on Instagram



[@atsearlycareer](#)

"Like us" on Facebook



[ATSCommunity](#)

Follow us on Snapchat for a fun and face-to-face way to interact with ATS.

HASHTAGS

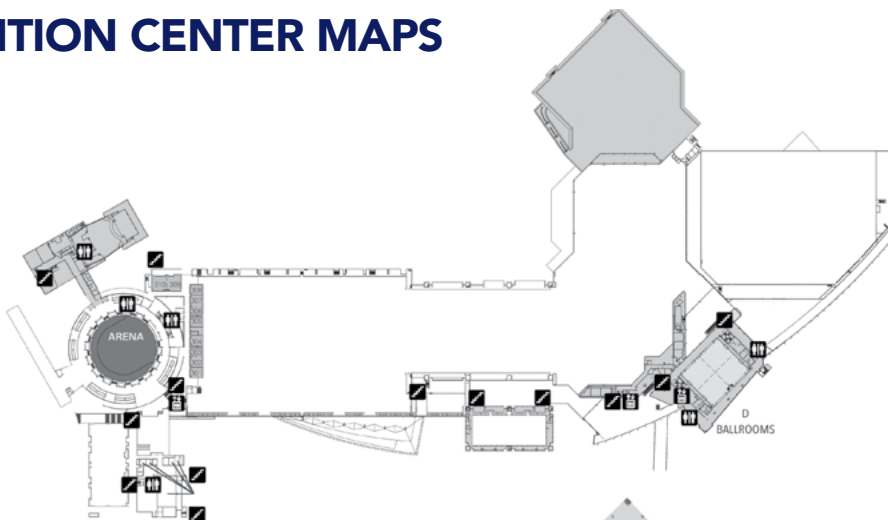
[#ATS2019](#)

General 2019 International Conference

[#ATSEarlyCareer](#)

General Early Career Professionals

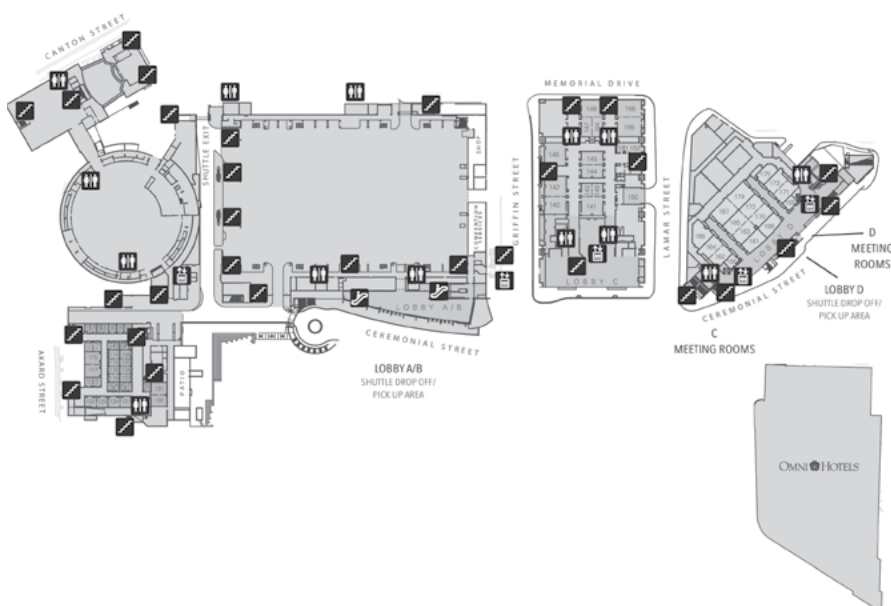
CONVENTION CENTER MAPS



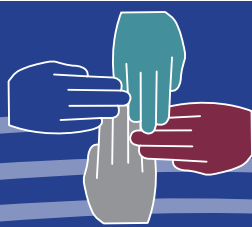
**Kay Bailey Hutchison
Convention Center
Dallas Level 3**



**Kay Bailey Hutchison
Convention Center
Dallas Level 2**



**Kay Bailey Hutchison
Convention Center
Dallas Level 1**



The ATS Would Like to Acknowledge our 2019 Corporate Members

BENEFACTOR



ACTELION

A JANSSEN PHARMACEUTICAL COMPANY
OF *Johnson & Johnson*



**Boehringer
Ingelheim**

Genentech

A Member of the Roche Group



GlaxoSmithKline



NOVARTIS

**SANOFI GENZYME
REGENERON**



sunovion



teva | Respiratory

**Theravance
Biopharma** 
Medicines That Make a Difference®



**United
Therapeutics**
CORPORATION

PATRON



insmed



**Mallinckrodt
Pharmaceuticals**



Mylan®
Seeing
is believing™

VERTEX

SUPPORTER

Bellerophon 
THERAPEUTICS

**Boston
Scientific**
Advancing science for life™

**Fisher & Paykel
HEALTHCARE**

Galápagos 



SHIONOGI INC.



Verona Pharma

FRIEND



Bristol-Myers Squibb

pulmonX



santhera



veracyte

Vitalograph
Your cardio-respiratory partner

VIVUS



We help the world breathe®
PULMONARY • CRITICAL CARE • SLEEP

Thank you for your support.

CORPORATE MEMBERSHIP PROGRAM | www.thoracic.org

CALL FOR RESEARCH ABSTRACTS

DEADLINE: JUNE 17

2018 CLINICAL RESEARCH WINNER

“

It was an invaluable opportunity to present my work to an external audience. To me, the conference was one of the most important events of my pulmonary fellowship.

Tianshi David Wu,
MD

”

Two Categories:

- ▷ Basic Science Research
- ▷ Clinical Research

OCTOBER 10-13, 2019
Warwick Allerton - Chicago
CHICAGO, IL

FOR MORE INFORMATION

njhealth.org/YIF2019
303.728.6585

15th Annual

RESPIRATORY DISEASE Young Investigators' Forum

Developing the next generation of physician-scientists:
a research mentorship and career advancement
opportunity for fellows and early career faculty.



WHY APPLY TO ATTEND?

- Opportunity to present and refine your research
- Receive mentoring to effectively enhance research presentations
- Explore strategies for career development and advancement
- Network with peers and renowned expert faculty
- Learn about new and emerging research in respiratory medicine
- Focused program for those interested in becoming physician scientists
- Travel, lodging and meal expenses covered
- Awards for top 3 presenters in each category

HOW IT WORKS

Submit an abstract on your research (clinical or basic science), abstracts are blinded and scored by expert faculty. The top 30 abstracts are accepted and invited to attend the Forum as faculty to present their research in full. Based on scores of the expert faculty, **the top 3 presenters in each category will receive a monetary award to be used for their research at their institution.**

This educational activity is sponsored and certified for CME credit by National Jewish Health. This activity is supported by an educational grant from AstraZeneca Pharmaceuticals LP.